

# ACDelco®

An ACDelco Publication for Australian Automotive  
Distributors, Stockists and Trade

# TODAY

FEBRUARY 2009 ISSUE

**INSIDE:**

- > Readers' Cars
- > Oil Filters – Helpful Hints
- > New Fuel Pump Range

ACDelco  
**FILTERS  
PROMO**

See inside for details.



**ACDelco**

Check out our new fuel pump  
range and catalogue

1800 ACDelco  
acdelco.com.au

Suits Most Makes Most Models

**ACDelco**

## Steve's Not So Mellow Yellow GT

Steven Tran, a 24 year old petrol head cabinet maker, is the proud owner of this stunning and very yellow 2002 Nissan Silvia Spec-R GT.

Steven recently arrived in Melbourne from Perth, and hasn't had the vehicle all that long. He's spent the last couple of months tidying it up including a serious cut and polish of that magnificent paint job and going over all the mechanicals to ensure they are up to scratch and finished off properly.

The car is a limited edition (400 worldwide) Nissan Silvia. Towards the end of this Silvia models production life Nissan decided to convert all the spare shells and body parts sitting around at the plant into a limited edition model Spec-R GT. It came with some serious body modifications and performance "extras" and a sporty interior which looks absolutely fantastic.

Stock standard output on these pocket rockets is 200hp and Steve is hangin' to get to the local dyno and claims it'll output over 300hp at the rears. Once Steve has upgraded the turbo and the rotors to the larger slotted variety with beefier discs he intends running down the quarter mile at Calder Park.

Steven is justly proud of his Silvia and the finish and performance of the vehicle reflects his efforts to ensure both are to an exceptionally high standard.

Steven's limited edition Nissan Silvia boasts the following performance enhancements:

- TEIN fully adjustable suspension.
- TRUST externally mounted intercooler.
- High performance turbo charger.
- Adjustable turbo boost gate.
- HKS super sequential high volume blow off valve.
- Nissan factory body kit.
- APEXi 3" full flow exhaust.



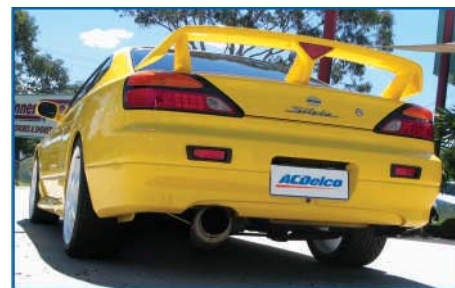
Owner Steven Tran.



This ain't no yellow peril!



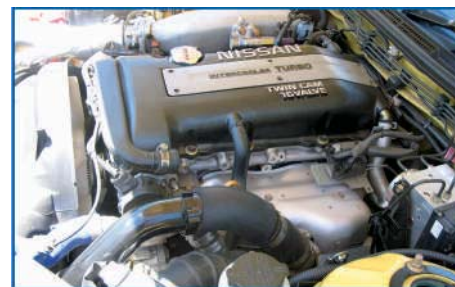
One very sporty interior!



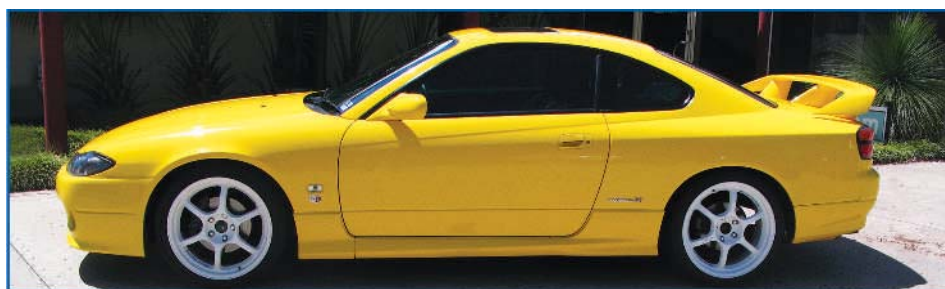
The big exhaust and muffler go to battle with speed humps.



GT badging was the same as the Skylines.



Packed with punch.



Great aero dynamic lines.

Would you like to see your vehicle appear in reader's cars? All you have to do is send us an image and a brief description of your vehicle. If your vehicle is selected as a 'reader's car' you will receive an ACDelco Jacket. All entries received will also be considered for the 2010 ACDelco Calendar. If your vehicle is selected for the calendar, you will receive a \$200 debit card.

2

Send your information to ACDelco Reader's Cars, 5/35 Dunlop Road, Mulgrave VIC 3170 or email to [customerservice@acdelco.com.au](mailto:customerservice@acdelco.com.au)

# FILTERS BONUS OFFER!

Limited Time Offer – See Conditions\*

**Purchase any 50 ACDelco Filters in one transaction & receive a bonus ACDelco 1GB MP3 player\***



*ACDelco 1GB MP3 player slim design with mirror finish, Micro SD card slot, USB 2.0, direct USD jack, MP3 – WMA playback, power 1 x AAA battery, battery life is up to 15 hours of music play time, earphones – extended cable and CD ROM included. Dimensions: 28.5 W x 82 H x 22 D mm. Weight 35g.*

## ACDelco offers a comprehensive product range to suit Most Makes Most Models.

\* Conditions: Offer only valid for ACDelco Filters purchased in one transaction between 01/02/09 and the close of business 31/03/09. All purchases should be made during the offer period ending on 31st March 2009, and all claims must be received by ACDelco no later than 15th April 2009. Offer only open to Aust. trade customers. Employees and immediate families of ACDelco Stockists / Distributors and Holden Dealers are ineligible. The 1GB MP3 player reward is awarded by the completion of the redemption form below. Allow up to six weeks for delivery of bonus product(s). The image of the 1GB MP3 player is indicative only and the actual 1GB MP3 player may vary slightly from the picture shown. Entitlements are not transferable or exchangeable. The redemption process will require the claimant to submit a copy of the relevant invoice(s) to claim the rewards. "ACDelco Promotions", P.O. Box 1714, Melbourne, VIC 3001. (ABN 84 006 893 232).

Complete the form below to redeem your ACDelco bonus product(s). Either fax to (03) 9797 7380 or post to ACDelco Promotions, P.O. Box 1714, Melbourne, VIC 3001 and attach a copy of your invoice(s) as proof of purchase to receive your ACDelco bonus product(s). Allow up to six weeks for delivery of bonus product(s).

Business Name: ..... Contact Name: .....

ABN: ..... Email: ..... Telephone: .....

Mailing Address: (Not a PO Box) .....

Invoice No.: ..... Date of Purchase: ..... Place of Purchase: .....

Items Purchased:  Filters =  1GB MP3 player(s)

If you do not want any ACDelco special offers emailed to you in future please indicate by ticking this box.

**\* Please attach a copy of invoice as proof of purchase.**

Suits Most Makes Most Models



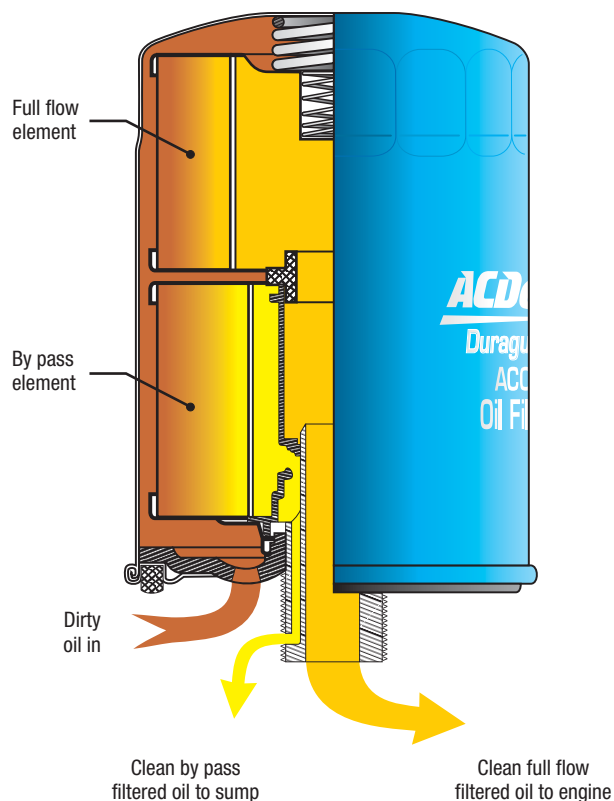
## Dual Flow Oil Filters

ACDelco Dual Flow Oil Filters contain two separate elements inside the one housing. This allows for clean oil to be delivered to the engine lubrication circuit while providing the additional filtering required by Diesel engines. One of these is a full flow element which filters the oil and supplies it to the engine's lubrication circuit. The other element is a bypass element, the oil which passes through this element is returned back to the sump. The bypass element has a finer micron rating, and is therefore a more efficient filter than the normal full flow elements. This arrangement allows the engine to maintain constant clean oil supply, while providing continual high filtration of the oil in the sump.

The two different oil streams are separated by an internal tube arrangement. Once oil has passed through each of the elements, (from the outside to the inside), there are two separate chambers. One of these for oil going back to the sump and one for oil going to the engine. The spigot that the filter threads onto has two different outlets. Generally the engine outlet will be on the inside of the spigot and the bypass outlet will be on the outside of the spigot.

ACDelco have a range of quality dual flow oil filters to suit numerous Diesel vehicles including the following applications:

Make & Model	Engine	Year
Ford Courier	2.5L	5/96 – 2/99
Ford Courier	2.5L Turbo	2/99 – 5/00
Hino Commercials – various applications		
Holden Jackaroo	3.1L	1992 – 2/98
Holden Rodeo	3.0L Turbo	2002 – 03
Isuzu Commercials – various applications		
Mazda B2500 Non Turbo	2.5L Turbo	4/96 – 2/99
Mazda B2500 Turbo	2.5L Turbo	2/99 – 5/00
Mazda E2500	2.5L Turbo	8/97 on
Mitsubishi Express SH	2.5L 4D56	9/91 – 1998
Mitsubishi Pajero NH	2.5L 4D56T	5/91 – 11/98
Mitsubishi Pajero NJ	2.8L 4M40T	12/93 – 99
Mitsubishi Pajero NK, NL, NM	2.8L 4M40T	2000 – 01
Mitsubishi Pajero NP w/ Direct Inj	3.2L 4M41T	2002 – 06
Mitsubishi Triton ME, MF, MG, MH	2.5L 4D56	1986 – 9/91
Mitsubishi Triton MH, MJ	2.5L 4D56	10/91 – 96
Mitsubishi Triton MK	2.8L 4M40T	10/96 – 06
Nissan Patrol GQ Turbo	2.8L Turbo	1995 – 97
Nissan Patrol GU Turbo	2.8L Turbo	12/97 – 01
Toyota Hiace w/ 5L Eng.	3.0L	2000 – 04
Toyota Hilux w/ 1KZTE Eng.	3.0L Turbo	1999 – 04
Toyota Landcruiser 70 & 80 Series	3.5 & 4.2L	1990 – 98
Toyota HZJ78R, 79R	4.2L	1998 – 06
Toyota HDJ78R, 79R	4.2L Turbo	2001 – 06
Toyota HZJ105 (100 Series)	4.2L	1998 – 06
Toyota HDJ100R (100 Series)	4.2L Turbo	2000 – 06



Dual flow filter oil flow diagram



Cut away view of ACDelco Dual Flow Filter

## ACDelco EFI Fuel Pumps

### Troubleshooting Tips

The fuel pump is one of many components in the EFI fuel system. Before replacing a pump, it is essential the root cause of the fuel system problem is correctly identified.

There are many variations of the EFI system; hence it is essential you refer to the vehicle manufacturer's manual for their recommended procedure.

There are some basic checks that apply to most EFI systems. Before commencing checks, ensure there is sufficient fuel in the tank. Also ensure checking is conducted in a clean workshop with no naked flames.

### Pressure Check

- Connect fuel pressure gauge to the system in accordance with vehicle manufacturer's procedures. Switch ignition to the "on" position.
- If there is no system pressure or system pressure is too low, check for blocked or damaged fuel lines or hoses, blocked pump inlet filter and blocked in line fuel filter.
- If system pressure is too high, switch off the ignition, disconnect the fuel return line from the fuel pressure regulator, securely connect a hose to the fuel pressure regulator outlet and collect fuel into a safe container. Switch ignition to the 'on' position. If pressure reading is too high, that would indicate the fuel pressure regulator could require replacement.
- If the pressure reading is within specifications, check fuel lines to find the restriction and correct.

### Electrical Check

- If system pressure is below the manufacturers specifications, switch ignition to the "on" position. A buzzing sound should be heard from the tank indicating the pump is operating. Typically the pump will operate for a few seconds and then shut off. This is a safety feature.
- If there is no sound heard from the pump, check for voltage at the pump.
- If there is voltage at the pump, replace the pump and strainer assembly.
- If there is no voltage at the pump, check the pump relay, pump relay fuse, main fusible links and oil pressure switch. Always refer to the vehicle manufacturer's handbook for specific checks.

### About ACDelco Fuel Pumps

#### 1. Manufacturing Process:

All ACDelco EFI Fuel Pumps are developed using computer aided design techniques. All pumps are individually tested and sealed before shipping assuring performance, reliability and customer satisfaction.

#### 2. Features and benefits:

ACDelco Fuel Pumps come with all fitting requirements, such as:

- Strainer
- Gaskets
- Hose clamps
- Washers
- Plug & connecting wire
- Sleeve
- Connecting rubber hose

\* Note that fittings provided with the pump are dependent on kit and application.

- ACDelco EFI Fuel Pumps that are supplied as a module, replicate the OEM assembly and include pump, sender, float and strainer in a pre-assembled unit ready to fit.
- All ACDelco EFI Fuel Pumps are backed by a 2 year/40,000km Australia wide warranty.
- ACDelco EFI Fuel Pumps are extensively tested under a variety of conditions to ensure long life.
- Fitting instructions are included with each EFI pump.
- ACDelco's range is under constant development to meet the changing market needs. Check our web site for latest applications.

### ACDelco EFI Fuel Pumps Installation Tips

- Diagnose reason for initial pump failure.
- Ensure fuel tank is free from all contaminants, by removing tank and flushing.
- Do not re-use stale or contaminated fuel.
- When installing the pump, ensure that the work environment is clean, to prevent dirt, grit, sand, and grease from entering the pump.
- Position new rubber isolator (when supplied) onto fuel pump inlet post, ensuring the fuel pump is fully seated and the isolator is correctly positioned in the hanger assembly.
- All ACDelco EFI Fuel Pumps come with a fuel filter strainer.
- Install the fuel filter strainer to the inlet port of the pump. Place the fuel strainer on a clean flat surface and push the pump down into the fuel strainer until it is fully seated.
- When fitted correctly it will "snap" into place and be difficult or impossible to remove by hand.
- Failure to ensure the fuel strainer is installed correctly may impact warranty.
- After the installation has been completed, check vehicle system for leaks.
- Always replace all EFI fuel filters otherwise over pressuring of the system could occur (Refer to the ACDelco Filter Catalogue for correct application details).



Typical ACDelco EFI Fuel Pump Kit.

## Meet ACDelco's Mr March: Ford Or Holden Fan?



Glen with his fleet of company cars.

With car brand loyalty you're either one or the other, ie Ford or Holden! Here's a story about Glen King who prefers both.

Glen was a born and bred Holden fanatic who just loved everything Holden. Glen's first car was a Toyota Corona and when the time came to trade it in, he had his heart set on a new red Holden HJ four door GTS in the showroom at his local Holden Dealer.

After working hard in two jobs for a number of years, Glen saved the necessary cash to put a sizable deposit on his dream car. So off he went to close the deal on the HJ GTS. But upon arriving at the dealership in his old Toyota Corona and looking somewhat scruffy in his fibreglass work clothes, he was non too politely told he couldn't afford the car of his dreams and to "bugger off" as he was "making a mess of the new car showroom".

Devastated that he couldn't buy the car of his dreams and angry at his treatment by the sales person, Glen abruptly went to his local Ford Dealer and purchased a Ford XC GLX Fairmont. That was a pivotal point for Glen and from that moment Glen became a die hard Ford fan and has strongly supported the blue oval brand since! Glen's dedication to Ford includes:

- Being a dedicated Ford racing fan (strong follower of Dick Johnson).
- Mountains of signed Ford memorabilia (race suits, panels and model cars).
- A highly modified BA Ford XR8 work ute (DJR replica).
- A prized 2007 Limited Edition Ford GT (seen on ACDelco's 2009 Calendar).

So for 25 odd years Glen had been a sole Ford fanatic, until in 2007, when Glen made some decisions which caused his staff at King's Fibreglass question his brand allegiance. Glen's long suffering office manager, Andrea, was due for a new company car, and just happens to be mad about Holdens. As Glen sees her as a valuable asset to the company, a brand new HSV Clubsport joined the company's fleet of Fords – much to everyone's complete amazement.

You may think that this is the end of the story but no, not only did one Holden join the fleet, but on a visit to Sydney (to see the V8 Supercar round at Eastern Creek) in 2008, Glen came across a pristine Holden HJ four door GTS and after some tough negotiation, that long forgotten dream car now sits proudly in Glen's garage amongst his other treasured Ford possessions.

While Glen's car brand loyalty is questionable when it comes to parts, ACDelco has him covered.



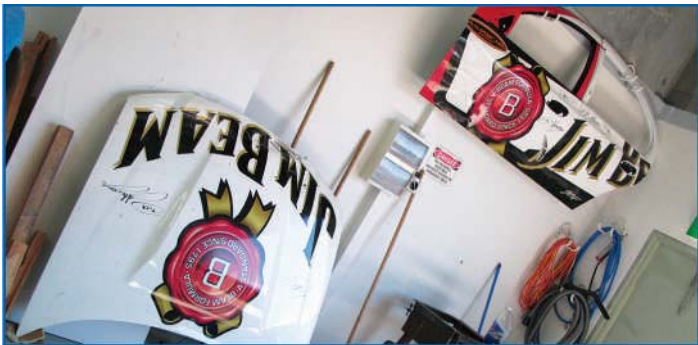
Glen goes for some 'hot laps' with Stephen Johnson in the DJR team BA Falcon at Winton Victoria.



Glen's ultimate dream car turns to reality.



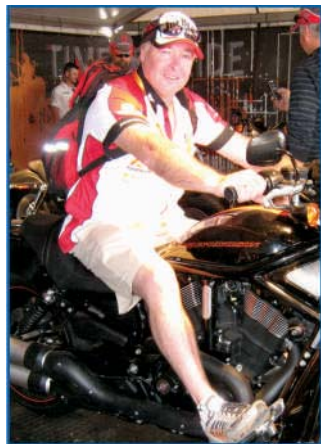
Glen's Monaro from another perspective.



Just some of Glen's race panel collection.



Glen in the hot seat.



Glen is also a big bike fan.

## DID YOU KNOW...



\*Ford AU Falcon  
1998 - 2000 with  
4.0 litre engine.  
Refer to ACDelco  
Catalogues for more details.

- ✓ Batteries
- ✓ Brake Pads
- ✓ Brake Rotors
- ✓ Fuel Pump
- ✓ Remanufactured Cylinder Head Kit
- ✓ Air Filter
- ✓ Remanufactured Engine
- ✓ Oil Filter
- ✓ Remanufactured Power Steering Rack
- ✓ Remanufactured Power Steering Pump
- ✓ Fuel Filter
- ✓ Shock Absorber
- ✓ Spark Plugs
- ✓ Alternator Belt

## All Play & A Little Work Make For A Great ACDelco Photo Shoot

I glanced across at the alarm clock and noticed that I had beaten it to my 5.30am wake up bell. A quick look out the window revealed little except for the fact that it was crisp and clear morning with little or no wind. The perfect morning for an ACDelco Battery outdoor photo shoot, especially one to be taken on the launching ramps of the Patterson River at Seaford on Melbourne's Port Phillip Bay.

Content with the thought that I was about to combine work with some very enjoyable play (fishing), I proceeded to shower, shave and dress for the three seasons that Melbourne weather was sure to throw at us that day.

The morning photo session was to consist of three key assets converging on the Patterson River boat ramp for the photo shoot. Two amateur fishermen – Bob and Alan and their rig, a 17 foot Barcrusher aluminium half cabin with a 140 Suzuki outboard, a professional photographer – Mark from Just All Images and Tony and myself from ACDelco's Marketing Agency.



*A beautiful dawn at Patterson River.*

As I travelled to the session location, the morning sun was erupting in savage golden hues across a cloudy sky, bringing a broad smile to my face as nothing can be worse than an early morning outdoor photo shoot in pouring rain!

Everyone arrived onsite on time and we all wandered across to the bakery near the boat launching ramps for some very necessary breakfast. The wafting odour of freshly baked bread filled our nostrils and it wasn't long before the entire team was devouring a banquet of toasted ham and cheese sandwiches washed down with various combinations of tea and coffee, ah the joys of advertising work at 6.00am on a Saturday morning!

After a chorus of wild stories including fanciful fishing stories from Alan and Bob, it was time to prepare for the photo shoot. The aim of the shoot was to develop photography for a new ACDelco Marine Battery advertisement. We intended to shoot the Barcrusher being launched from the ramp and we were going to do this just before peak launch period to "catch the flavour" of the moment. Everything had to happen just right or we would be strung up by fishermen held up due to delays on the launch ramp!



As luck would have it, the photo shoot went off like a charm, much to the amusement of a number of waiting fishermen who ended up being willing extras on the morning. Mark proceeded to take shots from every conceivable angle and couldn't contain his excitement about the quality of the shots due to the great morning weather. With the photo session in the bag, it was time to get on with the serious part of the day, the fishing.

We cruised down the Patterson River and out into the bay, Bob gunned the Suzuki and we were off to one of Bob's secret fishing holes known only to him (and as it turned out just about every other fisherman out there).

Barcrusher boats are renowned for their ability to handle various conditions and today was no different, the boat easily handled the light chop and the Suzuki provided ample power to get the boat up on the water.

After about 25 minutes listening to the subdued rumble of the 140 four



*Mark the photographer instructing Bob as to body language.*



The actors – Al, Bill, Bob and Tony enjoying a dirty joke!

stroke, we arrived at Bob's "secret spot" and proceeded to drop a line. Now this really is secret men's business, the only sounds being the lapping of the water under the boat, the reels winding in and out and mates swapping silly stories and remedies for all the worlds problems out there on the water – it just doesn't get any better than this, apart from the bloody racket coming from other boats!

Feet up, fishing rod in one hand, cup of tea in the other and the flaties biting like there was no tomorrow. We were using frozen squid and they were taking the bait like they had never had a feed. I must admit to be very partial to flat head, a nice eating fish as long as it is carefully filleted, and these were a lovely size – about 35cm long.

Al and Bob were having a great day and both ended up catching their quota, the boys are both keen fishermen and given the chaotic nature of Melbourne's weather don't get out as often as they would like to. Bob spends



Getting "the scene" right.

some time up north each year with his work and manages to squeeze a week of fishing out of Darwin or Cairns. He loves the fishing up north (Cairns or Darwin), especially the barramundi fishing.

After a light lunch of sandwiches and some delicious home made fruit cake and moving between a few of Bob's other favourite fishing holes, it was time to call it a day. I had caught some very nice flaties and was more than happy with my catch.

It was time to head back to the boat ramp, load the boat, wash it down and head for home. A most enjoyable day for all involved.

Note the actors were only paid for the time relating to the photo shoot.



Setting up the boat.

**ACDelco** Maintenance Free  
**MARINE BATTERIES**

*Now is not the time to find out your battery isn't an ACDelco Battery!*

Whether it's the boat ramp or the middle of the bay, safe boating requires a dependable battery. ACDelco Maintenance Free Marine Batteries are built tough with proven reliability to power you through the toughest of conditions.

You can depend on ACDelco Maintenance Free Marine Batteries to get you there and back.

**ACDelco Maintenance Free Batteries Features:**

- Built in hydrometer (most batteries) – Indicates state of charge.
- Factory-sealed, lead calcium technology makes this battery truly maintenance free.
- Polypropylene case combines light weight with high-impact strength.
- Integrated or rope handle – For ease of transport and installation.
- All ACDelco Maintenance Free Batteries feature lead calcium expanded grids (lead calcium technology) for improved resistance to corrosion, overcharging, gassing, water usage, self discharge and thermal runaway, all of which limit battery life in conventional lead acid batteries.

**ACDelco offers a comprehensive product range to suit Most Makes Most Models.**

1800 ACDelco  
acdelco.com.au
Suits Most Makes Most Models

The finished ad.

## ACDelco Releases New EFI Fuel Pump Catalogue

The new ACDelco EFI Fuel Pump Catalogue is available in hard copy from your local ACDelco Stockist or you can view an electronic copy on the new ACDelco Australia Website at: [www.acdelco.com.au](http://www.acdelco.com.au)

The new catalogue includes over 24 new part numbers and over 150 new applications, and offers a wealth of information on fault diagnosis, installation tips, product data and applications.



## GM PERFORMANCE PARTS



Check out the entire range of GM PERFORMANCE PARTS which includes engines, gauges, valve covers, air filters, harmonic balancers and also many more performance products available from EAGLES AUTO PARTS, visit: [www.gmperformanceparts.com.au](http://www.gmperformanceparts.com.au)

**MELBOURNE**  
**SYDNEY**  
**BRISBANE**

**92 South Gippsland Hwy, Dandenong VIC 3175**  
**8 Marigold Pl (off Marigold St), Revesby NSW 2212**  
**1 / 100 Park Rd, Slacks Creek QLD 4127**

**TEL: 03 8710 3000**  
**TEL: 02 9771 5566**  
**TEL: 07 3442 8000**

# DID YOU KNOW...



\*Mitsubishi Magna TE/TF  
1996-99 with 3.0 litre V6 engine.  
Refer to ACDelco Catalogues  
for more details.

**ACDelco** offer these parts to suit Mitsubishi Magna\*?

<p><b>Sealed Maintenance Free Battery</b> Part No. 22FR530SMF</p>  <p><b>Low Maintenance Accessible Battery</b> Part No. 22FR54WC</p> 	<p><b>Disc Brake Rotors</b> Part No. ACDR425 (Front) Part No. ACDR426 (Rear)</p> 	<p><b>Oil Filter</b> Part No. AC028</p> 	<p><b>Remanufactured Engine</b> Part No. 17803661</p> 
<p><b>Brake Pads</b> Part No. ACD1223 (Front - Akebono) Part No. ACD1238 (Rear - Akebono) Part No. ACD1203 (Front - PBR) Part No. ACD1204 (Rear - PBR) Part No. ACD1223 (Front - Sumitomo) Part No. ACD1239 (Rear - Sumitomo)</p> 	<p><b>Remanufactured Cylinder Head Kit</b> Part No. 19101122</p> 	<p><b>Air Filter</b> Part No. ACA94</p> 	<p><b>Fuel Pump</b> Part No. EP104AU</p> 
<p><b>Wiper Refills</b> Part No. AURT6</p> 	<p><b>Remanufactured Power Steering Rack</b> Part No. ACS1681</p> 	<p><b>Alternator Belt</b> Part No. 6PK1196 (with AC) <b>Power Steering Belt</b> Part No. 4PK0900 <b>Timing Belt</b> Part No. TB259</p> 	<p><b>Fuel Filter</b> Part No. ACF93</p>  <p><b>Spark Plugs</b> Part No. FR2LS (Conventional) Part No. AC5 (Rapidfire) Part No. 41801 (Prof. Platinum)</p> 

**ACDelco offers a comprehensive Product Range to suit Most Makes Most Models.**

*For your nearest ACDelco Automotive Parts Stockist call 1800 ACDelco*

**Suits Most Makes Most Models**

**ACDelco**

## ACT

**MITCHELL**  
Canberra Carparts  
Tel: 02 6241 0099

**GREENWAY**  
Commonwealth Motors  
Tel: 02 6282 3522

**PHILLIP**  
Commonwealth Motors  
Tel: 02 6282 3522

## NSW

**ALBURY**  
Bockman Batteries  
Tel: 02 6021 3615

**ALBURY**  
Quinlans  
Tel: 02 6021 5311

**ARMIDALE**  
Cliff Wright Motors  
Tel: 02 6772 5511

**BALLINA**  
Ballina Autoparts  
Tel: 02 6686 8616

**BATHURST**  
Mitchell Batteries  
Tel: 02 6331 3088

**BELMONT**  
Battery All Sorts  
Tel: 02 4945 9700

**CENTRAL & NORTHERN  
REGIONS**  
Sealed Performance  
Batteries  
Tel: 1300 309 244

**COFFS HARBOUR**  
Banana Coast Batteries  
Tel: 02 6652 4455

**CONDELL PARK**  
Autoquip  
Tel: 02 9708 3322

**DUBBO**  
Frank Cross Tyres  
Tel: 02 6884 4204

**EASTERN CREEK**  
Boyd Distribution  
Tel: 02 9675 0000

**EMU PLAINS**  
Spare Parts 'R' Us  
Tel: 02 4735 4788

**GIRRAWEE**  
Battery All Sorts  
Tel: 02 9769 1060

**GOSFORD**  
Central Coast Holden  
Tel: 1800 033 526

**GOSFORD WEST**  
Battery All Sorts  
Tel: 02 4323 4065

**GRIFFITH**  
Central Auto Parts  
Tel: 02 6962 7877

**GRIFFITH**  
MIA Tyre Service  
Tel: 02 6964 1333

**GUNNDAH**  
Gunnedah Batteries  
Tel: 02 6742 1646

**INVERELL**  
Barto's Tyre & Battery  
Tel: 02 6722 5170

**LEETON**  
MIA Tyre Service  
Tel: 02 6953 6866

**LIDCOMBE**  
Suttons Parts  
Tel: 02 9648 3688

**MOOREBANK**  
McGrath Holden  
Tel: 02 9602 3322

**MOREE**  
Protect Auto Electrics  
Tel: 02 6752 1110

**MORRISSET**  
Bullseye Auto Parts  
Tel: 02 4973 1189

**MORRISSET**  
Morisset Batteries  
Tel: 02 4970 4321

**NARELLAN**  
Mobile Affordable  
Batteries  
Tel: 02 4647 4212

**NAROOMA**  
Narooma Motors  
Tel: 02 4476 1175

**NARRABRI**  
Busy Bee Auto Electrical  
Tel: 02 6792 1295

**NEWCASTLE**  
Newcastle City Holden  
Tel: 02 4962 2401

**ORANGE**  
Western Battery  
Company  
Tel: 02 6362 7127

**PAMBULA**  
Nolan Autoparts  
Tel: 02 6495 6657

**PENSHURST**  
RPM Auto Spares  
Tel: 02 9570 8844

**PORT MACQUARIE**  
North Coast Batteries  
Tel: 02 6581 1993

**QUEANBEYAN**  
Alpine Batteries  
Tel: 02 6299 2733

**REVESBY**  
Eagle Auto Parts  
(GM Performance Parts)  
Tel: 02 9771 5566

**RIVERWOOD**  
Streetwise Auto Parts  
Tel: 02 9534 4188

**SINGLETON**  
Singleton Auto Electrical  
Tel: 02 6572 4188

**SOUTHERN REGION**  
R&J Batteries  
Tel: 03 5335 7088

**ST. LEONARDS**  
Hunter Holden  
Tel: 02 8198 1881

**SWANSEA**  
Swansea Spares  
Tel: 02 4971 4722

**SYDNEY**  
Sealed Performance  
Batteries  
Tel: 1300 309 244

**TAMWORTH**  
DTM  
Tel: 02 6762 2606

**TUGGERAH**  
Bullseye Auto Parts  
Tel: 02 4353 1979

**TUGGERAH**  
Central Coast Holden  
Tel: 1800 033 526

**YAMBA**  
One Stop Tyre &  
Automotive  
Tel: 02 6646 1666

**NT**

**STUART PARK**  
Kerry Automotive  
Tel: 08 8980 8050

**STUART PARK**  
Darwin Auto Mobile Care  
Tel: 0414 640 686

**QLD**

**ASPLEY**  
Zupps Aspley  
Tel: 07 3246 8022

**BRISBANE**  
Sealed Performance  
Batteries  
Tel: 07 3277 7321

**BUNDABERG**  
Battery Discount  
Warehouse  
Tel: 0417 570 372

**BUNDAMBA**  
Ipswich Batteries  
Tel: 07 3816 1851

**BURLEIGH HEADS**  
Global Auto Spares  
Tel: 07 5576 4522

**CAIRNS**  
Caseys Battery Service  
Tel: 07 4031 9339

**COOPERS PLAINS**  
Zupps Coopers Plains  
Tel: 07 3259 5000

**GARBUTT**  
CTI Batteries  
Tel: 07 4725 2998

**GYMPIE**  
Energy Box  
Tel: 07 5483 8544

**MACKAY**  
A1 Batterypro  
Tel: 07 4957 6123

**MOOROOCHYDORE**  
KB Auto One  
Tel: 07 5443 2511

**MORNINGSIDE**  
General Bearing Co.  
Tel: 07 3899 8000

**MT GRAVATT**  
Zupps Holden  
Tel: 07 3877 0177

**NANANGO**  
Nanango Motors  
Tel: 07 4163 1108

**NEWSTEAD**  
Eagers Retail  
Tel: 07 3364 1199

**OAKEY**  
The Barn (Oakey) Pty Ltd  
Tel: 07 4691 1620

**SLACKS CREEK**  
Eagle Auto Spares  
(GM Performance Parts)  
Tel: 07 3442 8000

**SOUTHPORT**  
Global Auto Spares  
Tel: 07 5571 0466

**SOUTHPORT**  
Sealed Performance  
Batteries  
Tel: 07 5532 8402

**SPRINGWOOD**  
Motorama  
Tel: 07 3804 4888

**STANTHORPE**  
M&D Auto One  
Tel: 07 4681 2846

**TOOWOOMBA**  
Abberton's British Auto  
Restorers  
Tel: 07 4633 7489

**TOWNSVILLE**  
Eagers Retail  
Tel: 07 4773 6933

**WARANA**  
KB Auto One  
Tel: 07 5493 4544

**WINDSOR**  
Automotive Service  
Solutions  
Tel: 07 3857 9500

**SA  
BERRI**  
Motor Traders Berri  
Tel: 08 8582 1544

**CLARE**  
H.R. Sanders  
Tel: 08 8842 2675

**EDWARDSTOWN**  
Motor Traders  
Tel: 08 8351 5150

**GEPPS CROSS**  
SA Batteries & Recycling  
Tel: 08 8359 5030

**HILTON**  
Motor Traders  
Tel: 08 8354 3015

**HOLDEN HILL**  
Motor Traders  
Tel: 08 8261 4499

**KILBURN**  
Motor Traders  
Tel: 08 8868 4800

**KILKENNY**  
Motor Traders  
Tel: 08 8445 7500

**LONSDALE**  
Motor Traders  
Tel: 08 8326 9155

**MILLICENT**  
Millicent Tyre Centre  
Tel: 08 8733 3300

**MOUNT GAMBIER**  
Motor Traders  
Tel: 08 8725 4321

**NORWOOD**  
Motor Traders  
Tel: 08 8362 1188

**PORT ADELAIDE**  
Smiths Motor Company  
Tel: 08 8400 7148

**PORT AUGUSTA**  
D&G Tyres  
Tel: 08 8642 5100

**PORT LINCOLN**  
Motor Traders  
Tel: 08 8682 1577

**SALSBURY PLAINS**  
Motor Traders  
Tel: 08 8250 2344

**THEBARTON**  
Metro Holden  
Tel: 08 8354 9522

**VIRGINIA**  
SA Batteries & Recycling  
Tel: 08 8380 9887

**TAS  
BURNIE**  
Motors Pty Ltd  
Tel: 03 6430 2420

**DERWENT PARK**  
Motors Pty Ltd  
Tel: 03 6211 0575

**DERWENT PARK**  
Island Batteries  
Tel: 03 6272 2943

**DEVONPORT**  
Motors Pty Ltd  
Tel: 03 6420 4542

**LAUNCESTON**  
Island Batteries  
Tel: 03 6334 0008

**LAUNCESTON**  
Motors Pty Ltd  
Kings Meadows  
Tel: 03 6340 7777

**MOONAH**  
Bob's Discount Car  
Parts  
Tel: 03 6273 7555

**VIC**

**BAIRNSDALE**  
Bairnsdale Batteries  
Tel: 03 5152 7666

**BAIRNSDALE**  
GP Motors  
Tel: 03 5152 4192

**BALLARAT**  
Lusky Automotive  
Tel: 03 5335 8705

**BALLARAT**  
R&J Batteries  
Tel: 03 5335 9888

**BAYSWATER**  
Pistons Auto Parts  
Tel: 03 9729 9522

**CAMPBELLFIELD**  
Preston Motors  
Tel: 03 9359 3999

**CLAYTON SOUTH**  
R&E Auto Parts  
Tel: 03 9540 8893

**CRANBOURNE**  
R&E Autos Parts  
Tel: 03 5996 3722

**CROYDON**  
R&E Auto Parts  
Tel: 03 9724 9955

**DANDENONG SOUTH**  
Any Power Batteries  
Tel: 08 8733 8244

**DANDENONG**  
Eagle Auto Parts  
(GM Performance Parts)  
Tel: 03 8710 3000

**DANDENONG**  
Preston Motors  
Tel: 03 8791 2550

**DANDENONG**  
R&E Auto Parts  
Tel: 03 9797 1199

**EPSOM**  
R&J Batteries  
Tel: 03 5448 3993

**GLEN WAVERLEY**  
R&E Auto Parts  
Tel: 03 9560 3400

**HALLAM**  
R&J Batteries  
Tel: 03 8786 3018

**HEIDELBERG**  
R&E Auto Parts  
Tel: 03 9457 3437

**HORSHAM**  
Horsham Autotech  
Tel: 03 5382 2622

**HORSHAM**  
Morrow Motor Group  
Tel: 03 5382 6163

**KORUMBURRA**  
Bostons  
Tel: 03 5655 1522

**KYABRAM**  
Kyabram Batteries  
Tel: 03 5852 1634

**LEONGATHA**  
Lund's Auto Electrical  
Tel: 03 5662 5525

**MALLACOOTA**  
Inlet Auto Electrics  
Tel: 03 5158 0828

**MANSFIELD**  
Mansfield Parts Centre  
Tel: 03 5779 1666

**MELTON**  
T.R. Auto Electrics  
Tel: 03 9747 6969

**MOE**  
John Buckton Auto  
Spares  
Tel: 03 5127 3944

**MORNINGTON**  
Mornington Batteries  
Tel: 03 5977 0779

**NORTH GEELONG**  
Corio Auto Parts  
Tel: 03 5278 8588

**PASCOE VALE**  
R&E Auto Parts  
Tel: 03 9350 5522

**ORBOST**  
Orbost Auto Electrics  
Tel: 03 5154 2341

**PRESTON**  
Fluidrive Automotive  
Technologies  
Tel: 03 9480 0988

**ROBINVALE**  
Autopro  
Tel: 03 5026 4055

**ROSEBUD**  
R&E Auto Parts  
Tel: 03 5986 7503

**SALE**  
R&E Auto Parts  
Tel: 03 5144 7011

**SHEPPARTON**  
HSM Spares  
Tel: 03 5831 1182

**SHEPPARTON**  
Thompson Motor Group  
Tel: 03 5822 2954

**STAWELL**  
Doctor DC Auto Electrics  
Tel: 03 5358 5338

**SWAN HILL**  
Edgar Motors  
Tel: 03 5032 4515

**TRARALGON**  
R&E Autos  
Tel: 03 5174 4706

**TULLAMARINE**  
R&J Batteries  
Tel: 03 9338 8444

**WARRNAMBOOL**  
City Car Care  
Tel: 03 5561 3870

**WARRACKNABEAL**  
SP & AJ Cox  
Tel: 03 5394 1580

**WILLIAMSTOWN**  
Hobson Bay Auto Electrical  
Tel: 03 9397 5977

**WA**

**ALBANY**  
Bennett's Batteries  
Tel: 1800 355 530

**ALBANY**  
Coventrys  
Tel: 08 9841 2999

**ASCOT**  
Battery King Australia  
Tel: 08 9477 1588

**BELMONT**  
Coventrys  
Tel: 08 9479 4298

**BIBRA LAKE**  
Coventrys  
Tel: 08 9434 6244

**BUNBURY**  
Coventrys  
Tel: 08 9721 4722

**BROOME**  
Alvolts Power Solutions  
Tel: 08 9193 7799

**BUSSELTON**  
Golden West Batteries  
Tel: 08 9754 4109

**CANNING VALE**  
Battery Mart  
Tel: 08 9411 2805

**CANNING VALE**  
Coventrys  
Tel: 08 9455 6255

**CARLISLE**  
Agriparts & Repairs Pty Ltd  
Tel: 08 9362 6811

**ESPERANCE**  
Battery Mart  
Tel: 08 9071 5406

**ESPERANCE**  
Coventrys  
Tel: 08 9071 1322

**GERALDTON**  
Battery Mart  
Tel: 08 9964 8404

**GERALDTON**  
Coventrys  
Tel: 08 9921 2388

**HYDEN**  
Wave Line Tyres  
Tel: 08 9880 5074

**KALGOORLIE**  
Coventrys  
Tel: 08 9021 1188

**KALGOORLIE**  
Reggie Blake Mobile  
Auto Electrical  
Tel: 08 9022 5916

**KARRATHA**  
Coventrys  
Tel: 08 9143 1422

**KELMSCOTT**  
Coventrys  
Tel: 08 9390 9033

**MALAGA**  
Coventrys  
Tel: 08 9209 1066

**MANDURAH**  
Coventrys  
Tel: 08 9581 9711

**MANJIMUP**  
Manjimup Automotive  
Services  
Tel: 08 9771 1388

**MERREDIN**  
Coventrys  
Tel: 08 9041 1144

**MIDLAND**  
Coventrys  
Tel: 08 9274 4411

**MORLEY**  
Coventrys  
Tel: 08 9376 5300

**MYAREE**  
Coventrys  
Tel: 08 9330 9155

**NARROGIN**  
Coventrys  
Tel: 08 9881 1388

**NORTHAM**  
Coventrys  
Tel: 08 9622 1999

**OSBORNE PARK**  
Coventrys  
Tel: 08 9446 8888

**PORT HEDLAND**  
Coventrys  
Tel: 08 9172 1066

**ROCKINGHAM**  
Coventrys  
Tel: 08